

Filotec



Detailed product information can be found on www.bopla.de



- More than 100 standard enclosures, comprised of 5 widths, up to 6 heights, 3 variants and various standard lengths
- Profile variants: Variant with membrane keypad area (1 mm and 1.5 mm), variant with cooling fins, variant with moulded-on wall brackets
- Special lengths available at short notice
- Anodised aluminium end cover

Colour:

Natural-coloured anodised

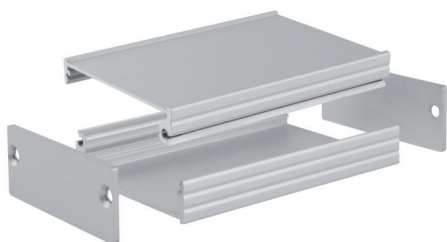
Protection class:

IP 40/DIN EN 60529

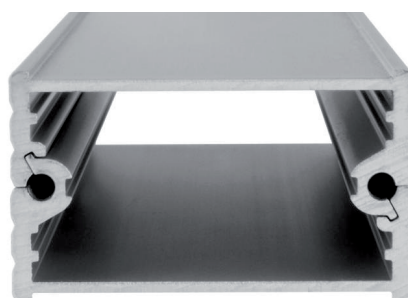
Enclosure material:

Al Mg Si 0.5 anodised; for details, please see Technical Information

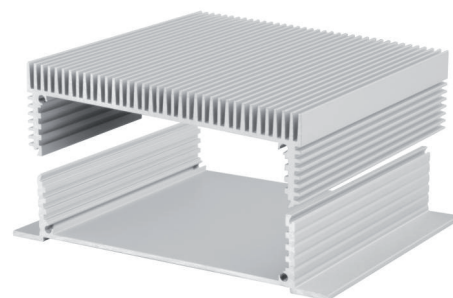
Aluminium profile enclosure series with many variants



Filotec consists of two aluminium profile half-shells which are mounted with the help of the cover.



The enclosure profiles are equipped with grooves to hold PCBs or mounting panels.



Size F 5.. / F 10.. offers a version with cooling fins and wall brackets as standard.



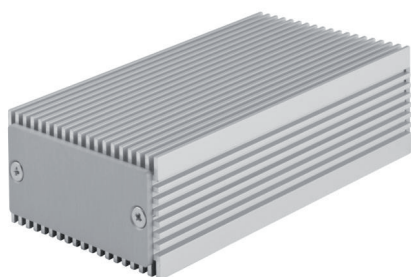
A profile with moulded-on wall brackets is also available in size F 5.. / F 10..



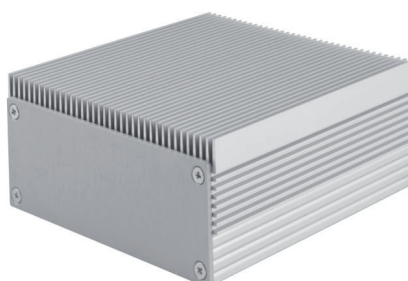
All enclosures are equipped with a 1 mm or 1.5 mm recessed surface for membrane keypads.



The covers offer various options for fitting connectors, printing, etc.



Combinations of size F 5.. / F 10.. profiles with cooling fins on both sides are always available on request.



Combinations of profile with membrane keypad area, and profile with cooling fins, is available on request in size F 5.. / F 10..

Filotec 3.. | Enclosures



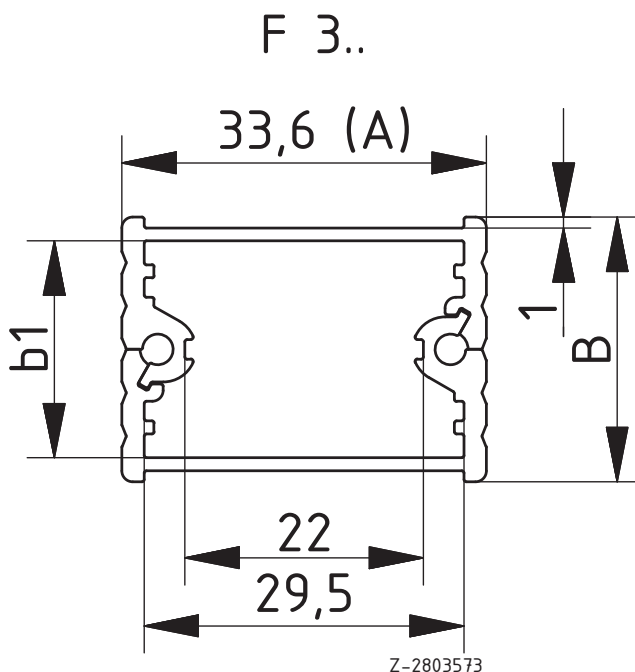
Filotec enclosures with membrane keypad area (1 mm)

Model	Order no.	A	B	C	b1
F 316-50	97131050	33,6	16,4	50	12
F 316-80	97131080	33,6	16,4	80	12
F 316-1000	97131000**	33,6	16,4	1000	12
F 320-50	97132050	33,6	20,4	50	16
F 320-80	97132080	33,6	20,4	80	16
F 320-1000	97132000**	33,6	20,4	1000	16
F 324-50	97133050	33,6	24,4	50	20
F 324-80	97133080	33,6	24,4	80	20
F 324-1000	97133000**	33,6	24,4	1000	20

Scope of delivery: 2 enclosure half shells, 4 screws for mounting cover

Note: C = profile length, special lengths on request. Covers: See following pages. Please order separately.

** = supplied without screw accessory pack. Please order fixing screws (1 piece) separately: 59000175.



* = Available on request

Filotec 4.. | Enclosures

Filotec enclosures with membrane keypad area (1 mm)

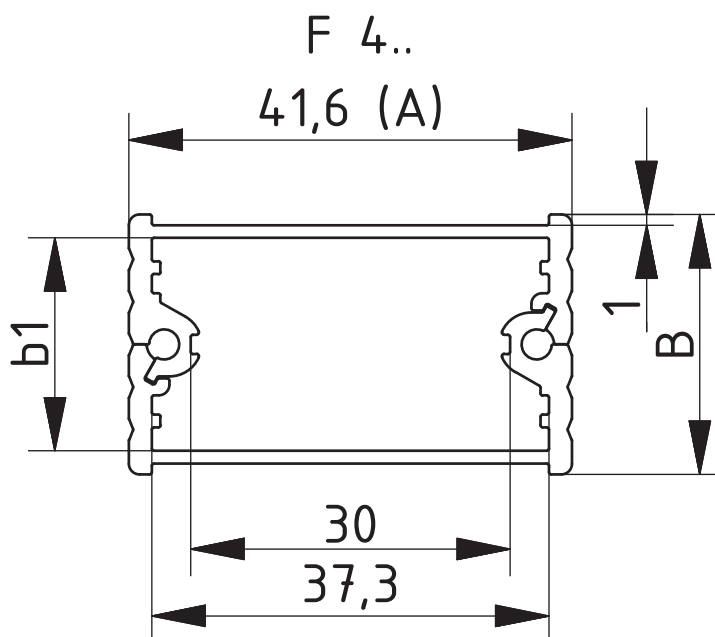


Model	Order no.	A	B	C	b1
F 416-50	97141050	41,6	16,4	50	12
F 416-80	97141080	41,6	16,4	80	12
F 416-100	97141100	41,6	16,4	100	12
F 416-1000	97141000**	41,6	16,4	1000	12
F 420-50	97142050	41,6	20,4	50	16
F 420-80	97142080	41,6	20,4	80	16
F 420-100	97142100	41,6	20,4	100	16
F 420-1000	97142000**	41,6	20,4	1000	16
F 424-50	97143050	41,6	24,4	50	20
F 424-80	97143080	41,6	24,4	80	20
F 424-100	97143100	41,6	24,4	100	20
F 424-1000	97143000**	41,6	24,4	1000	20

Scope of delivery: 2 enclosure half shells, 4 screws for mounting cover

Note: C = profile length, special lengths on request. Covers: See following pages. Please order separately.

** = supplied without screw accessory pack. Please order fixing screws (1 piece) separately: 59000175.



Filotec 5.. | Enclosures



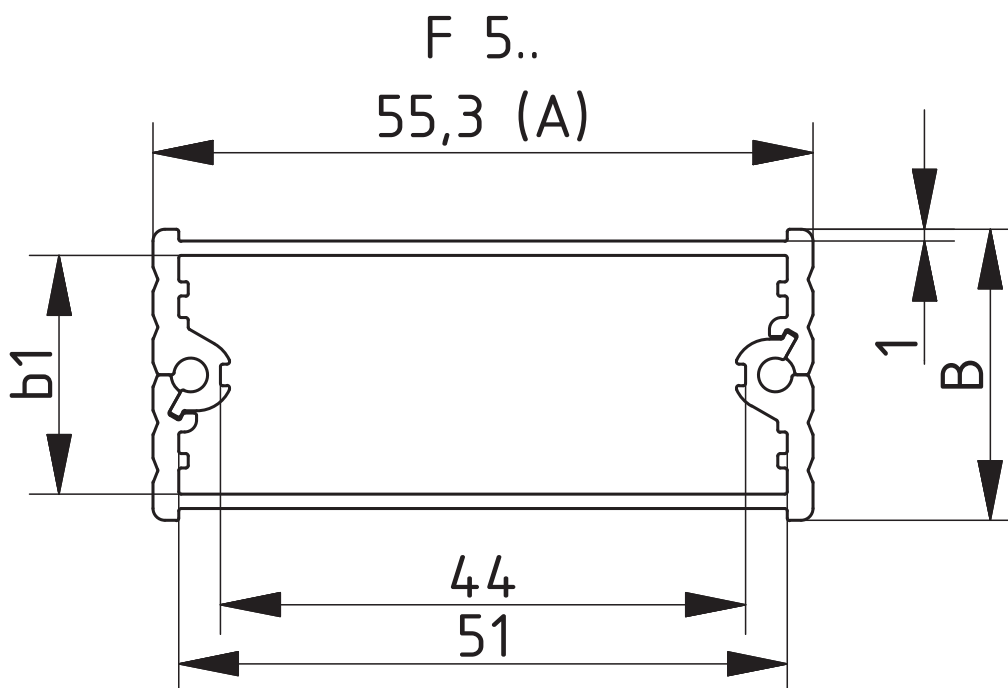
Filotec enclosures with membrane keypad area (1 mm)

Model	Order no.	A	B	C	b1
F 516-50	97151050	55,3	16,4	50	12
F 516-80	97151080	55,3	16,4	80	12
F 516-100	97151100	55,3	16,4	100	12
F 516-1000	97151000**	55,3	16,4	1000	12
F 520-50	97152050	55,3	20,4	50	16
F 520-80	97152080	55,3	20,4	80	16
F 520-100	97152100	55,3	20,4	100	16
F 520-1000	97152000**	55,3	20,4	1000	16
F 524-50	97153050	55,3	24,4	50	20
F 524-80	97153080	55,3	24,4	80	20
F 524-100	97153100	55,3	24,4	100	20
F 524-1000	97153000**	55,3	24,4	1000	20

Scope of delivery: 2 enclosure half shells, 4 screws for mounting cover

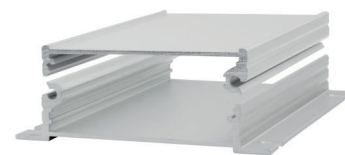
Note: C = profile length, special lengths on request. Covers: See following pages. Please order separately.

** = supplied without screw accessory pack. Please order fixing screws (1 piece) separately: 59000175.



Filotec 5..-...(K)WL | Enclosures

Filotec enclosures with membrane keypad area (1 mm) on one half-shell and continuous profiled wall brackets on the other half-shell



Model	Order no.	A	B	C	b1
F 520-50 WL	97252050	55,3	20,4	50	16
F 520-80 WL	97252080	55,3	20,4	80	16
F 520-100 WL	97252100	55,3	20,4	100	16
F 520-1000 WL	97252000**	55,3	20,4	1000	16
F 524-50 WL	97253050	55,3	24,4	50	20
F 524-80 WL	97253080	55,3	24,4	80	20
F 524-100 WL	97253100	55,3	24,4	100	20
F 524-1000 WL	97253000**	55,3	24,4	1000	20

Scope of delivery: 2 enclosure half shells, 4 screws for mounting cover

Note: C = profile length, special lengths on request. Covers: See following pages. Please order separately.

** = supplied without wall fitting holes and screw accessory pack. Please order fixing screws (1 piece) separately: 59000175.

Filotec enclosures with cooling fins on one half-shell and continuous profiled wall brackets on the other half-shell

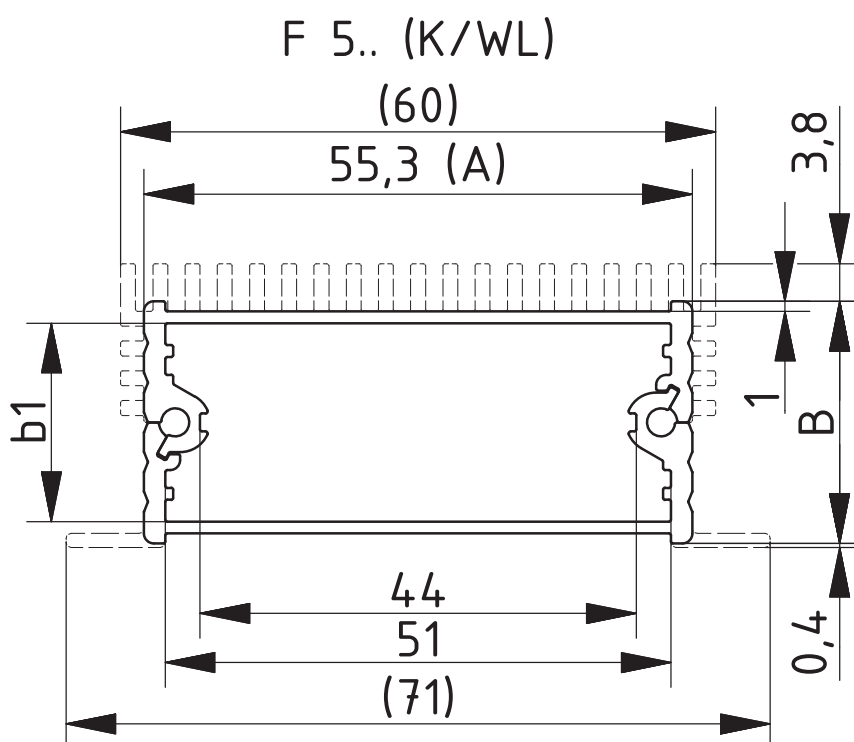


Model	Order no.	A	B	C	b1
F 524-50 KWL	97453050	55,3	24,4	50	20
F 524-80 KWL	97453080	55,3	24,4	80	20
F 524-100 KWL	97453100	55,3	24,4	100	20
F 524-1000 KWL	97453000**	55,3	24,4	1000	20

Scope of delivery: 2 enclosure half shells, 4 screws for mounting cover

Note: C = profile length, special lengths on request. Covers: See following pages. Please order separately.

** = supplied without wall fitting holes and screw accessory pack. Please order fixing screws (1 piece) separately: 59000175.



Filotec 7.. | Enclosures



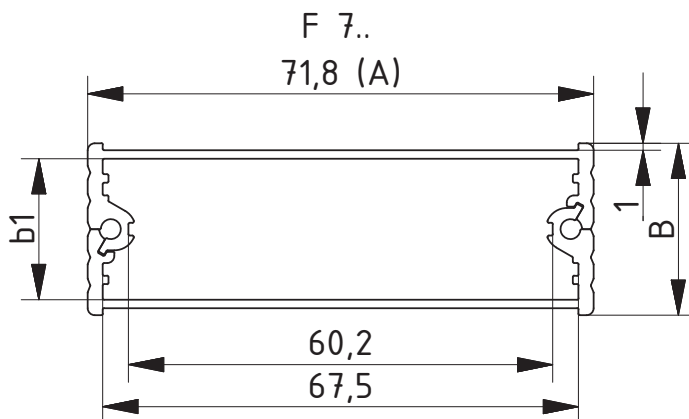
Filotec enclosures with membrane keypad area (1 mm)

Model	Order no.	A	B	C	b1
F 716-50	97171050	71,8	16,4	50	12
F 716-80	97171080	71,8	16,4	80	12
F 716-100	97171100	71,8	16,4	100	12
F 716-1000	97171000**	71,8	16,4	1000	12
F 720-50	97172050	71,8	20,4	50	16
F 720-80	97172080	71,8	20,4	80	16
F 720-100	97172100	71,8	20,4	100	16
F 720-1000	97172000**	71,8	20,4	1000	16
F 724-50	97173050	71,8	24,4	50	20
F 724-80	97173080	71,8	24,4	80	20
F 724-100	97173100	71,8	24,4	100	20
F 724-1000	97173000**	71,8	24,4	1000	20

Scope of delivery: 2 enclosure half shells, 4 screws for mounting cover

Note: C = profile length, special lengths on request. Covers: See following pages. Please order separately.

** = supplied without screw accessory pack. Please order fixing screws (1 piece) separately: 59000175.



Z-28034.08

Filotec 10.. | Enclosures

Filotec enclosures with membrane keypad area (1.5 mm)

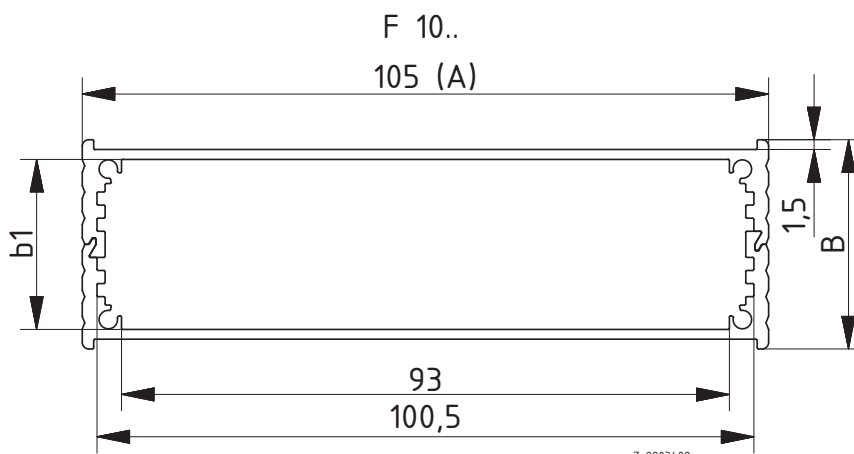


Model	Order no.	A	B	C	b1
F 1024-80	97113080	105	24	80	18
F 1024-100	97113100	105	24	100	18
F 1024-160	97113160	105	24	160	18
F 1024-220	97113220	105	24	220	18
F 1024-1000	97113000**	105	24	1000	18
F 1028-80	97114080	105	28	80	22
F 1028-100	97114100	105	28	100	22
F 1028-160	97114160	105	28	160	22
F 1028-220	97114220	105	28	220	22
F 1028-1000	97114000**	105	28	1000	22
F 1032-80	97115080	105	32	80	26
F 1032-100	97115100	105	32	100	26
F 1032-160	97115160	105	32	160	26
F 1032-220	97115220	105	32	220	26
F 1032-1000	97115000**	105	32	1000	26
F 1036-80	97116080	105	36	80	30
F 1036-100	97116100	105	36	100	30
F 1036-160	97116160	105	36	160	30
F 1036-220	97116220	105	36	220	30
F 1036-1000	97116000**	105	36	1000	30
F 1040-80	97117080	105	40	80	34
F 1040-100	97117100	105	40	100	34
F 1040-160	97117160	105	40	160	34
F 1040-220	97117220	105	40	220	34
F 1040-1000	97117000**	105	40	1000	34
F 1048-80	97118080	105	48	80	42
F 1048-100	97118100	105	48	100	42
F 1048-160	97118160	105	48	160	42
F 1048-220	97118220	105	48	220	42
F 1048-1000	97118000**	105	48	1000	42

Scope of delivery: 2 enclosure half shells, 8 screws for mounting cover

Note: C = profile length, special lengths on request. Covers: See following pages. Please order separately.

** = supplied without screw accessory pack. Please order fixing screws (1 piece) separately: 59000175.



Filotec 10..-...(K)WL | Enclosures



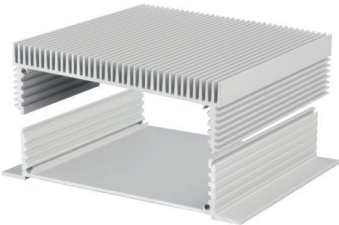
Filotec enclosures with membrane keypad area (1,5 mm) on one half-shell and continuous profiled wall brackets on the other half-shell

Model	Order no.	A	B	C	b1
F 1036-80 WL	97216080	130	36	80	30
F 1036-100 WL	97216100	130	36	100	30
F 1036-160 WL	97216160	130	36	160	30
F 1036-220 WL	97216220	130	36	220	30
F 1036-1000 WL	97216000**	130	36	1000	30
F 1040-80 WL	97217080	130	40	80	34
F 1040-100 WL	97217100	130	40	100	34
F 1040-160 WL	97217160	130	40	160	34
F 1040-220 WL	97217220	130	40	220	34
F 1040-1000 WL	97217000**	130	40	1000	34
F 1048-80 WL	97218080	130	48	80	42
F 1048-100 WL	97218100	130	48	100	42
F 1048-160 WL	97218160	130	48	160	42
F 1048-220 WL	97218220	130	48	220	42
F 1048-1000 WL	97218000**	130	48	1000	42

Scope of delivery: 2 enclosure half shells, 8 screws for mounting cover

Note: C = profile length, special lengths on request. Covers: See following pages. Please order separately.

** = supplied without wall fitting holes and screw accessory pack. Please order fixing screws (1 piece) separately: 59000175.



Filotec enclosures with cooling fins on one half-shell and continuous profiled wall brackets on the other half-shell

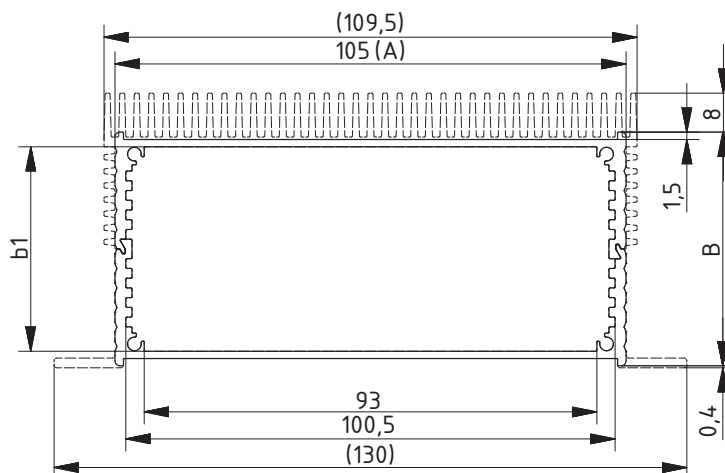
Model	Order no.	A	B	C	b1
F 1048-80 KWL	97418080	130	48	80	42
F 1048-100 KWL	97418100	130	48	100	42
F 1048-160 KWL	97418160	130	48	160	42
F 1048-220 KWL	97418220	130	48	220	42
F 1048-1000 KWL	97418000**	130	48	1000	42

Scope of delivery: 2 enclosure half shells, 8 screws for mounting cover

Note: C = profile length, special lengths on request. Covers: See following pages. Please order separately.

** = supplied without wall fitting holes and screw accessory pack. Please order fixing screws (1 piece) separately: 59000175.

F 10.. (K/WL)



Z-2803574

* = Available on request

Filotec | Cover

Cover, natural-coloured anodised aluminium, 2 mm



Model	Order no.	Note
F 316 D	97633160	For F 316-...
F 320 D	97633200	For F 320-...
F 324 D	97633240	For F 316-...
F 416 D	97641160	For F 416-...
F 420 D	97641200	For F 420-...
F 424 D	97641240	For F 424-...
F 516 D	97655160	For F 516-...
F 520 D	97655200	For F 520-...
F 524 D	97655240	For F 524-...
F 716 D	97671160	For F 716-...
F 720 D	97671200	For F 720-...
F 724 D	97671240	For F 724-...
F 1024 D	97610240	For F 1024-...
F 1028 D	97610280	For F 1028-...
F 1032 D	97610320	For F 1032-...
F 1036 D	97610360	For F 1036-...
F 1040 D	97610400	For F 1040-...
F 1048 D	97610480	For F 1048-...

Scope of delivery: 1 Cover